



**Catalogue**  
FOOD SERVICE  
**Chapter**  
REFRIGERATION

**Specific model**  
AUP-22G LC C CI 230V 1N 50Hz

19097879

23/01/2024

**DENOMINATION:**

Refrigerated cabinet - Advance Gastronorm with 2 compartments and 2 doors, at 50Hz.

**DESCRIPTION :**

- Interior and exterior completely built with AISI-304 stainless steel.
  - 80 mm, 40 kg/m<sup>3</sup> injected polyurethane insulation.
  - Embedded inner tray slides. Storage trays at 24 different levels 55 mm from each other.
  - Forced draught cooling system.
  - Copper piping and aluminium flaps evaporator.
  - HACCP system that keeps running logs.
  - Digital display for electronic and digital control of temperature and defrosting.
  - Acoustic and visual alarm connected to three sensors at strategic spots. They provide a total control and block the compressor in case of dirt or failure.
  - Opened door delay alarm.
  - Self-closing and stay open doors. When opened less than 90° they close by themselves. When opened more than 135° they stay open.
  - Built-in drainage to get rid of waste liquids inside the unit.
  - Embedded bottom and curved panels inside for easy cleaning and maintenance.
  - Height adjustable stainless steel legs.
  - Working temperature: from 0 °C to +8 °C (refrigerators) and from -18 °C to -22 °C (freezers).
  - Tested in climatic class V.
  - Inner LED lights with power switch (now also in freezing units).
- Refrigerated cabinet

**POSSIBLE OPTIONS :**

- Stainless Backing
- Legs instead of castors
- Door frame resistance
- Glass door
- Pedal
- Remote group

**STANDARD OPTIONS :**

- HACCP alarm
- Locks
- Castors
- UK plug

**POSSIBLE ACCESSORIES :**

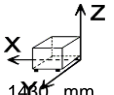
- REFRIGERATION
- ACCESSORIES
- GASTRONORM GRIDS

**SUPPLIED ACCESSORIES:**

- 12037936 Guide for grill GN-1/1 - wall - 562 mm - 1 piece 6
- 12037958 GN-2/1 GRID made in Epoxi (650x530) 6

**DIMENSIONS**

X Width	1358 mm	X Gross width	1460 mm
Y Depth	856 mm	Y Gross depth	880 mm
Z Height	2106 mm	Z Gross height	2185 mm
Net Weight	227,0 kg	Gross Weight	240,0 kg
Net volume	2,371 m <sup>3</sup>	Gross volume	2,750 m <sup>3</sup>



**ELECTRICITY TECHNICAL SPECIFICATIONS**

Amperage (A)	0,87 A
Electric frequency	50Hz
Electric power	0,192 kW
Voltage	230V - 1N

**GAS TECHNICAL SPECIFICATIONS**

Gas type	R-600a
----------	--------

**COLD TECHNICAL SPECIFICATIONS**

Annual elec. consumption	833,00 kWh
Clasif. Energy efficiency	C
Climate class	5
Cooling gas load	103,000 g
Energy Efficiency Index	38,21 %
Gross internal volume	1332 L
Model Type	Vertical cabinet
Power consumption 24h	2,28 kWh
Refrigeration net.vol	955 L
Refrigeration power	0,436 kW

**CONNECTIONS TECHNICAL SPECIFICATIONS**

Single-phase 230V wiring	2X1+T-2A
--------------------------	----------

**OTHERS**

Condensation system	Vent.
---------------------	-------

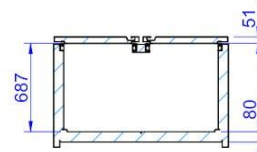
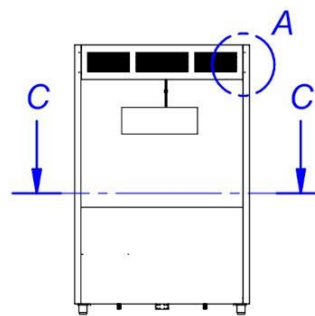
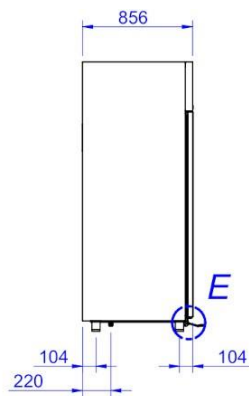
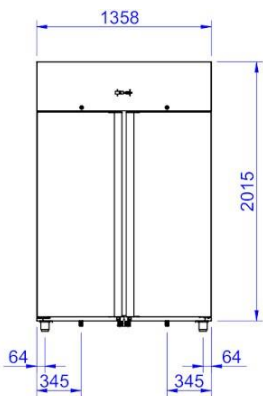


**Catalogue**  
FOOD SERVICE  
**Chapter**  
REFRIGERATION

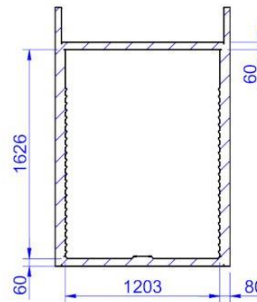
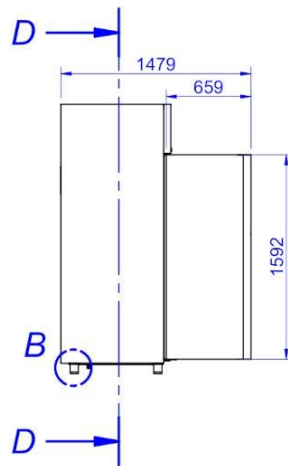
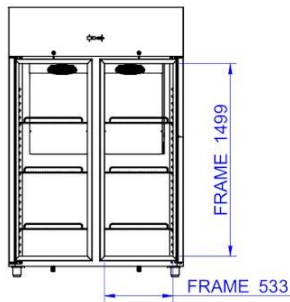
**Specific model**  
AUP-22G LC C CI 230V 1N 50Hz

19097879

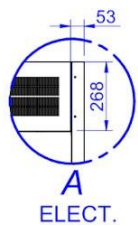
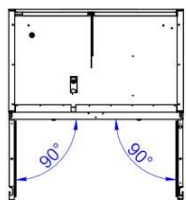
23/01/2024



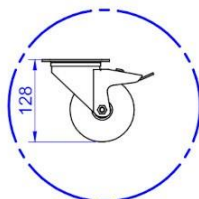
SECTION C-C



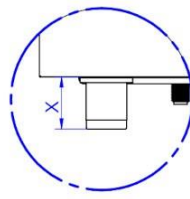
SECTION D-D



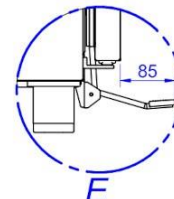
ELECT.



"R" OPTION



80<X<115



"PD" OPTION

