

Technical data sheet for  
**TWIN PAN ELECTRIC FRYER 450mm**

E44

- 17kW high performance twin pan fryer
- Easy clean stainless steel open pan with 10 year limited warranty
- 12L per pan oil capacity
- 25mm (1") drain valves
- Rear rollers
- Stainless steel exterior
- Easy service
- Fully modular



E44

**Overall Construction**

- Stainless steel pan with 10 year limited warranty
- Bull nose welded 1.5mm 304 stainless steel
- Splashback 1.2mm 304 stainless steel
- Side panels 1.2mm 304 stainless steel
- Double skin door with 0.9mm 304 stainless exterior
- Enamelled control panel
- Hinge out counterbalanced heating elements
- 25mm (1") drain valves
- 63mm dia. heavy-duty 1.2mm 304 stainless steel adjustable legs at front and two rollers at rear
- 2 baskets and stainless steel lid supplied standard

**Controls**

- Mechanical thermostats
- Thermostat range 60-200°C
- Large easy use controls with easy view scale
- Fail-safe over-temperature safety cut-outs
- Element tilt switch for heating cut-out on element lift
- Indicator lights for power and heating (per pan)

**Cleaning and Servicing**

- Open stainless steel pans for easy clean
- Easy clean basket support bar
- 25mm (1") drain valves for effective draining
- Easy clean stainless steel exterior
- Access to all parts from front of unit

# Technical data sheet for TWIN PAN ELECTRIC FRYER 450mm

## Specifications

**Production rate**  
31kg/hr

### Pan Size (per pan)

Oil capacity 12L (24lbs shortening) per pan  
Width 175mm  
Length 380mm  
Oil frying depth 95mm

### Baskets

2 chrome plated wire baskets  
140mm W x 335mm D x 145mm H

### Elements (per pan)

3 x 2.83kW stainless steel heating elements

### Electrical requirements

17kW, 400-415Vac, 50/60hz, 3P+N+E  
L1 23.6A  
L2 23.6A  
L3 23.6A

### Dimensions

Width 450mm  
Depth 812mm  
Height 915mm  
Incl. splashback 1085mm

### Nett weight

73kg

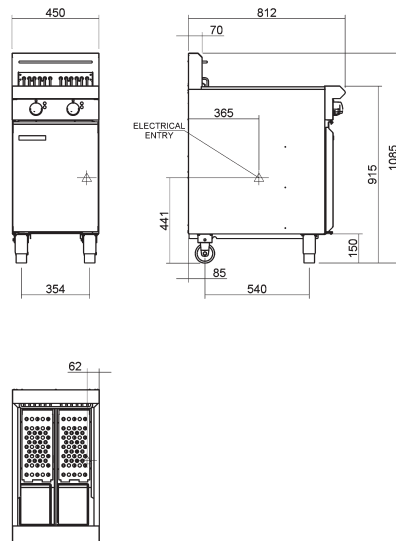
### Packing data

0.54m<sup>3</sup>, 114kg  
Width 870mm  
Depth 495mm  
Height 1255mm

### Options

Adjustable feet at rear  
Filtamax Filtration System  
Extra baskets  
Side splash guards  
Joining caps  
Casters

E44



**BLUE SEAL**

[www.blueseal.co.uk](http://www.blueseal.co.uk)  
[www.bluesealevolution.com](http://www.bluesealevolution.com)

## United Kingdom Blue Seal Limited

Unit 67  
Gravelly Business Park  
Gravelly  
Birmingham B24 8TQ  
England  
Telephone 0121-327 5575  
Facsimile 0121-327 9711  
Email [sales@blue-seal.co.uk](mailto:sales@blue-seal.co.uk)  
[www.blue-seal.co.uk](http://www.blue-seal.co.uk)

## Australia Moffat Pty Limited

740 Springvale Rd  
Mulgrave  
Victoria 3170  
Australia  
Telephone 03-9518 3888  
Facsimile 03-9518 3833  
Email [vsales@moffat.com.au](mailto:vsales@moffat.com.au)  
[www.moffat.com.au](http://www.moffat.com.au)

## New Zealand Moffat Limited

16 Osborne St  
PO Box 10-001  
Christchurch 8011  
New Zealand  
Telephone 03-389 1007  
Facsimile 03-389 1276  
Email [sales@moffat.co.nz](mailto:sales@moffat.co.nz)  
[www.moffat.co.nz](http://www.moffat.co.nz)



Designed and manufactured by

**MOFFAT**

ISO9001  
All Blue Seal products are designed and manufactured by Moffat using the internationally recognised ISO9001 quality management system, covering design, manufacture and final inspection, ensuring consistent high quality at all times.

**CE**

In line with policy to continually develop and improve its products, Moffat Limited reserves the right to change specifications and design without notice.

Printed in China  
© Copyright Moffat Ltd  
Moffat/4825-UK/BH/2.5M/12.06



**BLUE SEAL**  
EVOLUTIONSERIES