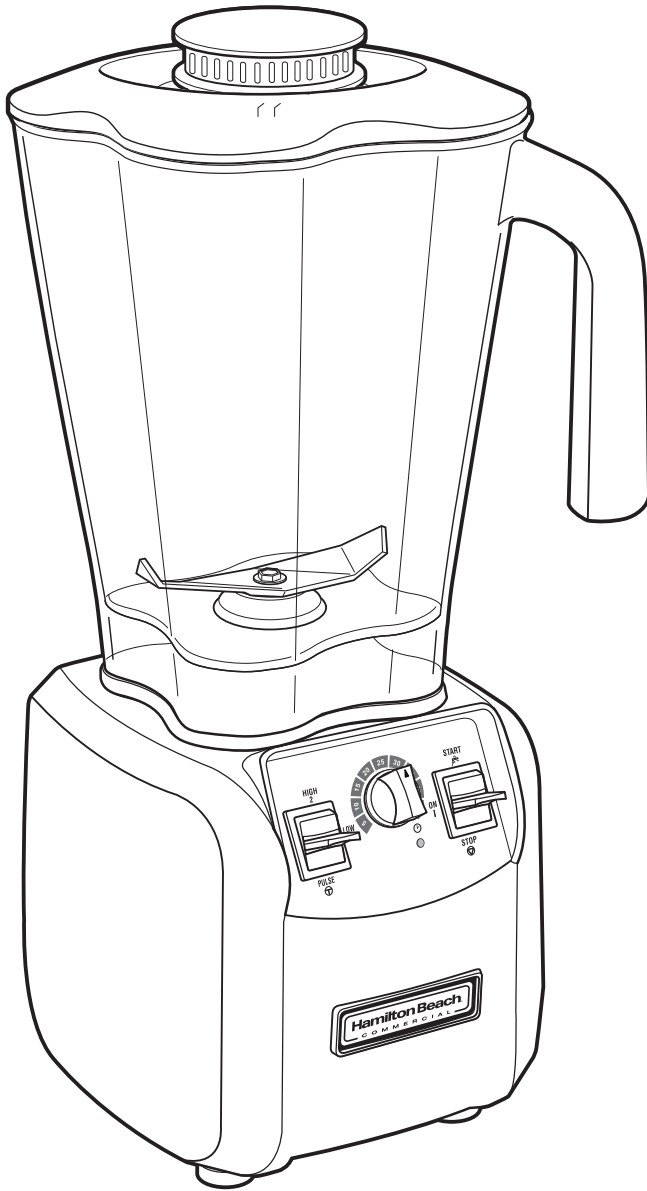


Hamilton Beach

COMMERCIAL



FURY

Hamilton Beach

COMMERCIAL

GB

FURY Series Bar Blender

Operation Manual (2)

FR

Mélangeur de bar série FURY

Manuel d'utilisation (4)

ES

Mezcladora para bar FURY

Manual de operación (6)

PT

Liquidificador Série FURY

Manual do Utilizador (8)

IT

Frullatore per bar FURY

Manuale per il funzionamento (10)

DE

Standmixer der FURY Serie

Bedienungsanleitung (12)

NL

FURY Serie Barmixer

Gebruiksaanwijzing (14)

DK

FURY Series Bar-blender

Betjeningsvejledning (16)

SE

FURY-serien barblandare

Bruksanvisning (18)

NO

Serie FURY Hurtigmikser

Brukerhåndbok (20)

GR

Μπλέντερ για μπαρ Σειρά FURY

Εγχειρίδιο χειρισμού (22)

RU

Миксер для бара, серия FURY

Руководство по эксплуатации (24)

TU

FURY Series Bar blender

Çalıştırma Kılavuzu (26)

CN

FURY 系列手提搅拌器

操作手册 (28)

JP

FURY バーブレンダー

操作マニュアル (30)

KR

FURY 시리즈 바 블렌더

사용 설명서 (32)

SA

الخلاطة التجارية طراز FURY

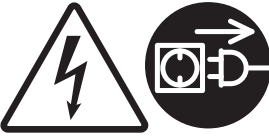
دليل التشغيل (35)

IMPORTANT SAFETY INSTRUCTIONS

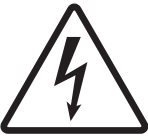
WARNING – When using electrical appliances, basic safety precautions should be followed, including the following:

- Read the Operation Manual before using blender. Keep Operation Manual handy.
- Before first use, wash container assembly in hot, soapy water. Do NOT place in dishwasher.
- Plug into a grounded outlet.
- Do not remove ground.
- Do not use an adapter.
- Do not use an extension cord.
- Disconnect power before cleaning or servicing.
- To reduce risk of personal injury, unplug cord from outlet when not in use, and before putting on or taking off parts.
- Unplug the blender and inspect the power cord insulation for cracks on a weekly basis. Refer to “Technical Service” for repair or replacement.
- To protect against electrical shock, do not immerse cord, plug, or blender base in water or any other liquid.
- Do not spray the base with a high-pressure spray gun.
- Extreme caution must be used when moving an appliance containing hot oil or other hot liquids.
- Do not use appliance for other than intended use.
- Not intended for use by or near children.
- Children should be supervised to ensure they do not play with the appliance.
- This appliance is not intended for use by persons (including children) with reduced physical, sensory, or mental capabilities, or lack of experience and knowledge, unless they have been given supervision or instruction concerning use of the appliance by a person responsible for their safety.
- The use of accessory attachments not recommended by the appliance manufacturer may cause injuries.
- To reduce risk of personal injury and to prevent damage to blender or container and cutter assembly, DO NOT insert utensils into blender container while operating blender.
- Do not store any kitchen utensils in the container because the blender would be damaged if inadvertently turned on.
- To prevent possibility of serious personal injury, keep hands out of blender container while operating blender. Always operate blender with container cover in place.
- Avoid contacting moving parts. Switch off the appliance and disconnect from power supply before changing accessories or approaching parts that move in use.
- Blades are sharp. Handle carefully.
- If cutter assembly blades are loose, discontinue use immediately and replace container. Do not attempt to repair or tighten cutter assembly.
- Inspect container and cutter assembly daily. Do not use broken, chipped, or cracked container. Check cutter for wear, nicks, or broken blades. Do not use broken, loose, or cracked cutting blades.
- Do not use outdoors.
- This appliance is intended for short periods of operation, with a rated operating time of 3 minutes.
- Do not leave blender unattended while it is operating.
- To prevent damage to blender, container, or cutter assembly, DO NOT move or shake blender while in operation. If blending action stops during operation, turn blender OFF (O), remove container from base, remove container cover, and use a thin rubber spatula to push mixture towards cutters.
- When blending hot liquids, remove center-piece of two-piece lid. Hot liquids may push lid off jar during blending. To prevent possible burns: Do not fill blender jar beyond the 1 quart (1 liter) level. With the protection of an oven mitt or thick towel, place one hand on top of lid. Keep exposed skin away from lid. Start blending at lowest speed.
- The blender is provided with a power switch/circuit breaker on the bottom of the unit. If the motor stops turning, reset the power switch.
- This blender’s motor is provided with a thermal overload protector. If the motor stops turning during operation or will not restart, unplug and allow to cool for 15 minutes. Plug unit back into outlet and resume operation.
- The normal function of this product may be disturbed by strong electromagnetic interference. If this occurs, simply reset the product and resume normal operation by following the operation manual. If normal operation cannot be resumed, place the product in a different location.
- Do not operate any appliance with a damaged cord or plug or after the appliance malfunctions, or is dropped or damaged in any manner. Refer to “Technical Service” for instructions on examination, repair, or electrical or mechanical adjustment.
- If the supply cord of this appliance is damaged, it must be replaced by the manufacturer or its service agent or a similar qualified person.
UK ONLY: If fitted with a non-rewirable U.K. plug, the 13 amp fuse approved by ASTA to be B.S. 1362 must be used. If you need a replacement fuse carrier, it must be replaced with the same colour coded carrier with the same markings. Fuse covers and carriers can be obtained from approved service agents.


- SAVE THESE INSTRUCTIONS -




Electrical Shock Hazard
Disconnect power before cleaning blender base.
Failure to follow these instructions can result in death or electrical shock.



Electrical Shock Hazard
Plug into a grounded outlet.
Do not remove ground.
Do not use an adapter.
Do not use an extension cord.
Failure to follow these instructions can result in death, fire, or electrical shock.



Cut Hazard
Always place cover on container when blending.
Do not put hands, spoons, or other utensils in container when blending.
Failure to follow these instructions can result in broken bones, cuts, or other injuries.

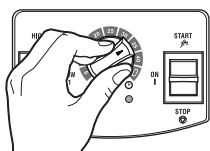


Burn Hazard
Always use caution when blending hot contents.
Failure to follow these instructions can result in burns.

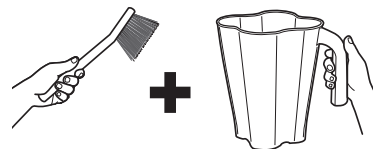
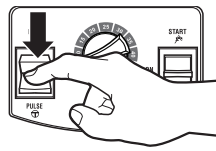
Sanitizing

Sanitize using 1 tablespoon (15 ml) of household bleach per 1 gallon (3.8 liter) of clean, cool water (60°F/16°C), mixed according to the instructions on the bleach.

1. Fill container with sanitizing solution, replace cover and filler cap and run on LOW (1) speed for 2 minutes. Empty container.
2. Wipe exterior with soft cloth dampened with sanitizing solution.
3. Immerse cover and filler cap in sanitizing solution for 2 minutes.
4. Place empty container on base and run on HIGH (2) speed for 2 seconds to remove any moisture from the cutter assembly.
5. **When ready to use**, rinse with clean water.



OR




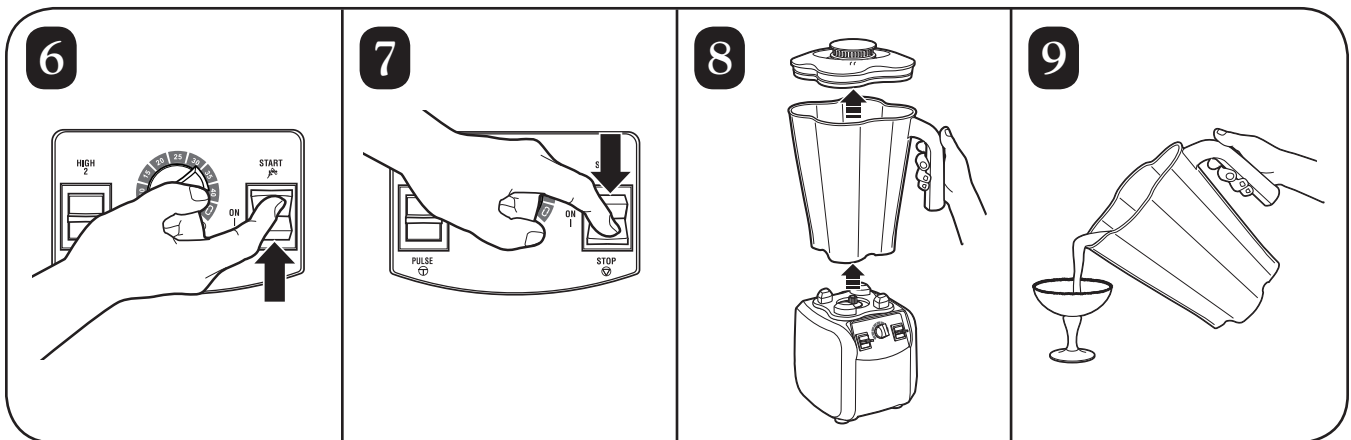
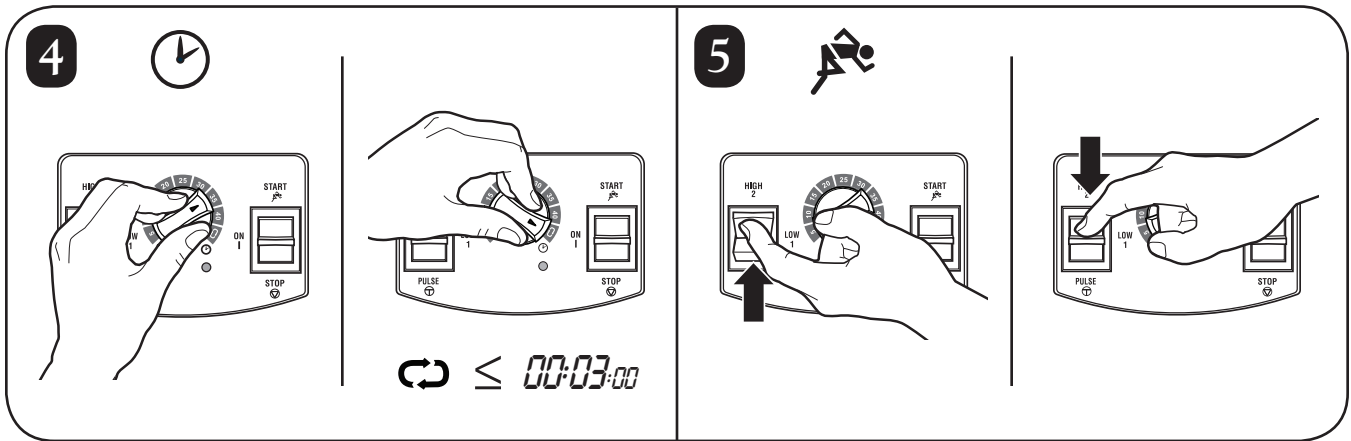
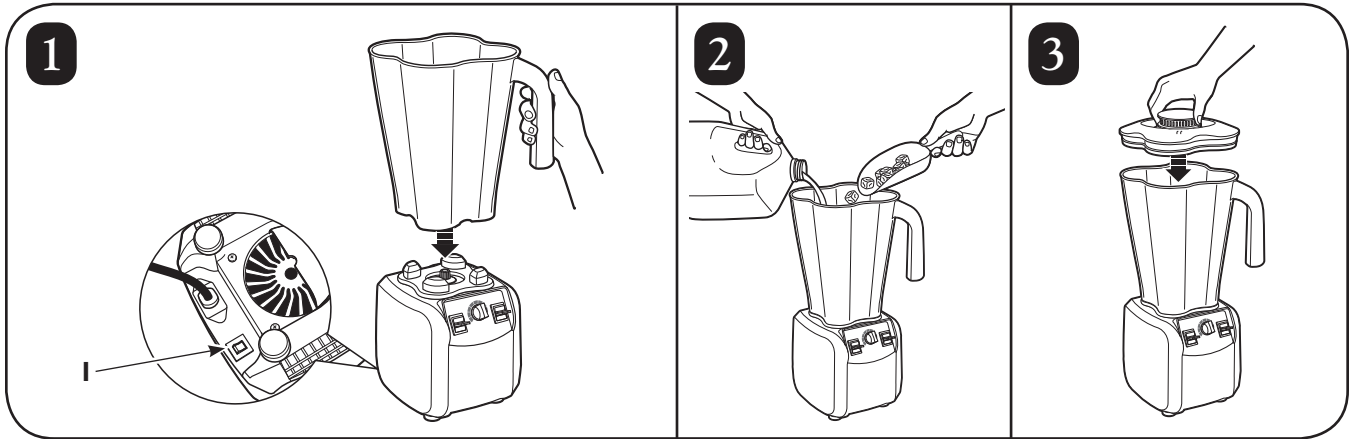
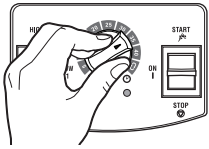
Technical Service

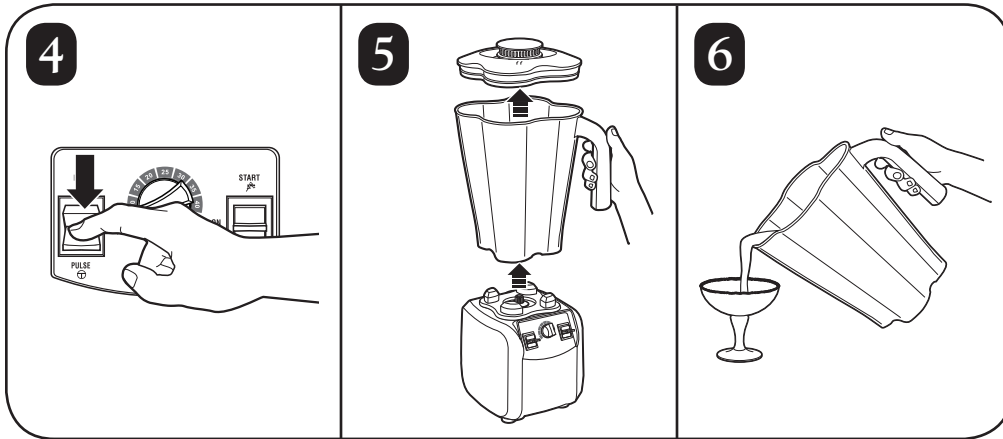
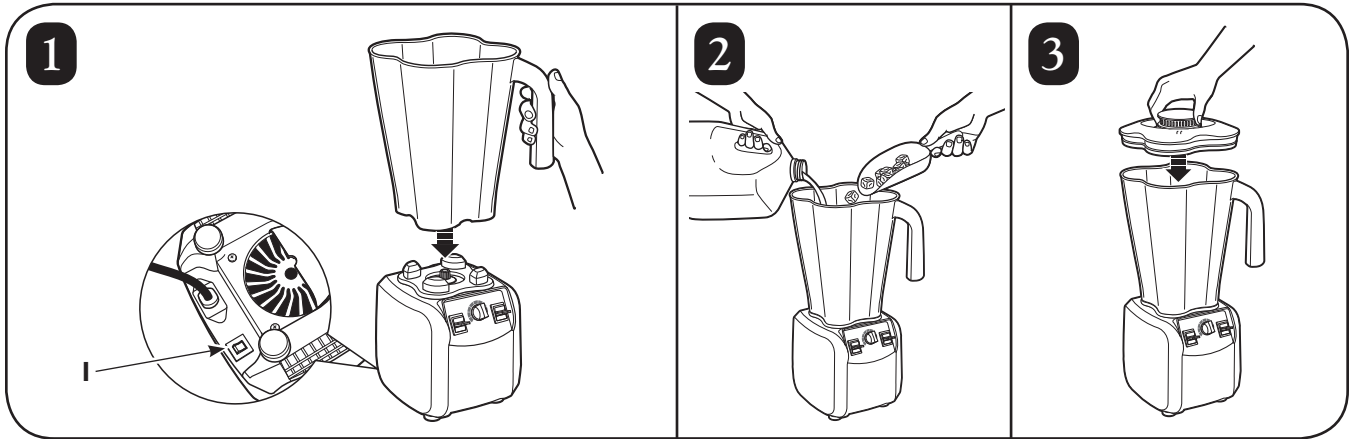
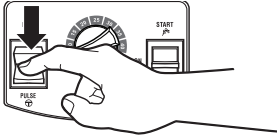
For assistance or replacement parts, call our
Technical Service number:
++910-693-4277
www.commercial.hamiltonbeach.com

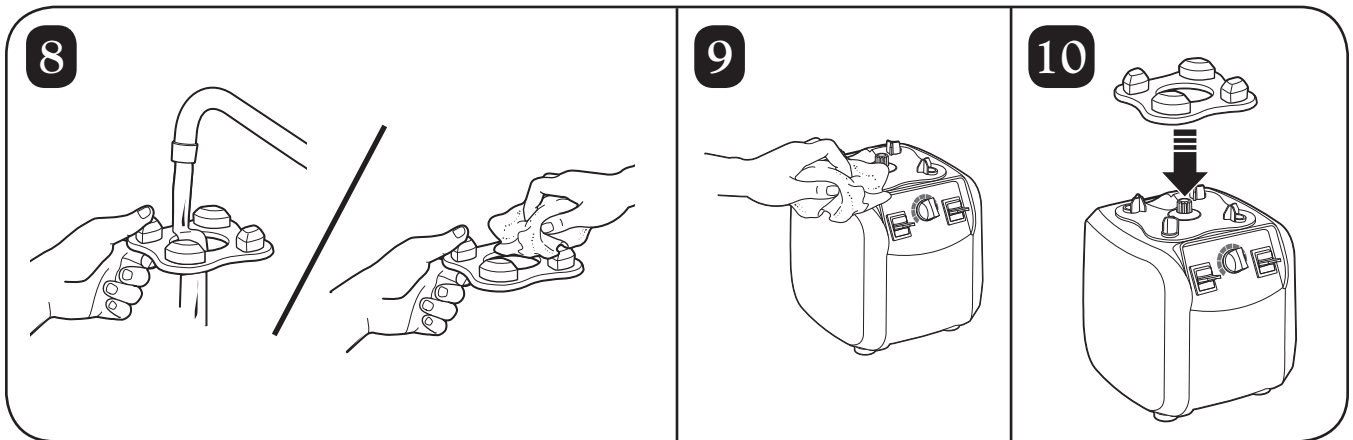
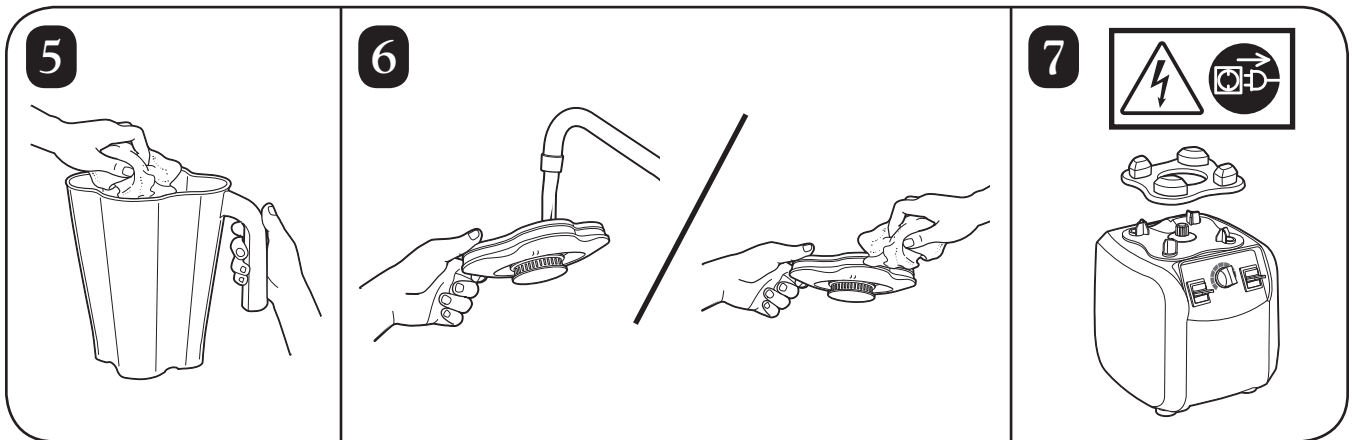
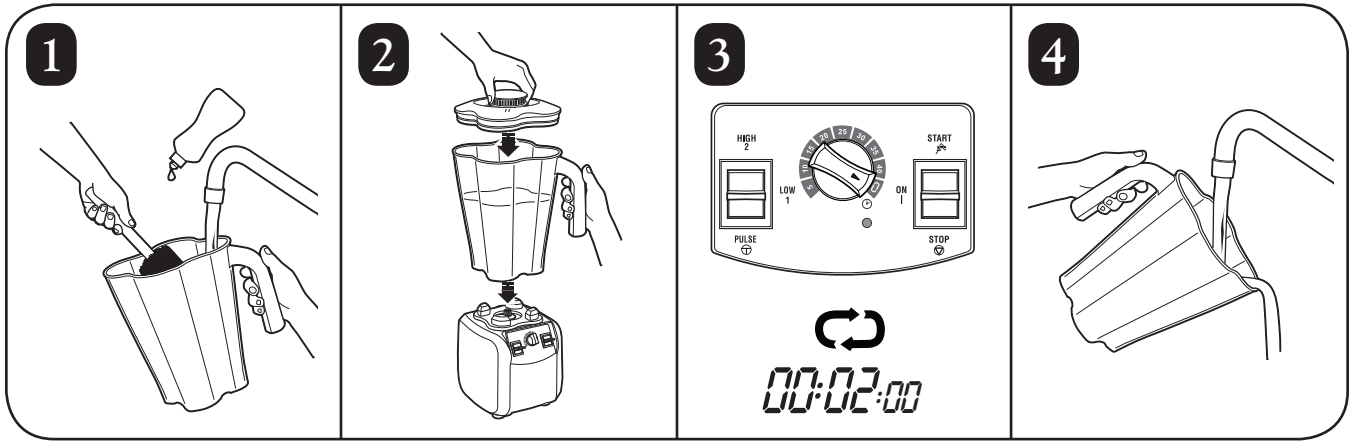
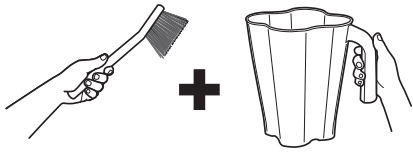
INSTRUCTIONS FOR PROPER DISPOSAL OF THIS PRODUCT PURSUANT TO THE EUROPEAN UNION'S DIRECTIVE ON ELECTRICAL WASTE

Please do not dispose of any electrical equipment as ordinary waste. Help conserve natural resources and protect the environment: when you have finished using this product, please dispose of it at your local waste collection or recycling center in the area reserved for electrical equipment. Contact your local authority to find the nearest waste collection center. To remind you to dispose of this product responsibly and separately from ordinary waste, it is marked with the symbol of a crossed-out trash bin.











261 Yadkin Road
Southern Pines, NC 28387

840220701
11/12

www.commercial.hamiltonbeach.com